

1 Bed Apartments (SOLD)

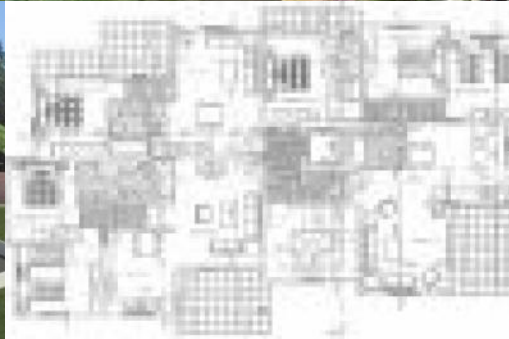
4 - (Ref.CPP206)

1 Bedrooms, Apartment

EUR 158,900

Located in Main town , Limassol

GBP 141,421



Details

District: Limassol
 Location: Main town
 Type: Apartment
 Condition: resale
 Levels: 1
 Bedrooms: 1
 Bathrooms: 1
 Covered: 50(m²)
 Verandas: 12(m²)

Description

This superb new off plan development is excellently positioned right in the heart of the Limassol tourist area. Serviced with an elevator and comprising of spaciouly designed 1, 2 and 3 bedroomed luxury apartments, there are three levels with each apartment having its own private covered parking area and boasting larger than average balconies.

As these apartments are within walking distance of Limassol's trendy shops, nightclubs and bars, and are just 200 metres from the beach they are a fantastic opportunity for the the discerning investor. The prices range from 93,000cyp upwards. The 3 bedroomed apartments have an added storage area.

The specifications here are for a 1 bed 1 bath first floor apartment, please contact us for details about the 2 and 3 bed properties and their facilities.